



This Week at Chabad Lubavitch of Maine



CANDLE LIGHTING TIMES
FOR
PORTLAND:

Friday, Aug. 21 7:16 pm

Torah Portion: [Shoftim](#)

Chabad Lubavitch of Maine **Email:** chabadofmaine@gmail.com **Phone:** 207-871-8947 www.ChabadofMaine.com



Message from the Rabbi

Dear Friends,

The countdown to the High Holidays officially begins this week. Although Rosh Hashanah is still a month away, the month of Elul is considered the beginning of the High Holiday season. In fact, in a way it is the most important component of all the holidays.

Rosh Hashanah is when we crown G-d as King of the Universe, and Yom Kippur is the day we connect the deepest level of our souls with Him. But Elul is when we get to know G-d on a personal level, with nothing standing in between us and Him. Once we have this relationship established, then we can go on to the other elements of the season Rosh Hashanah and Yom Kippur.

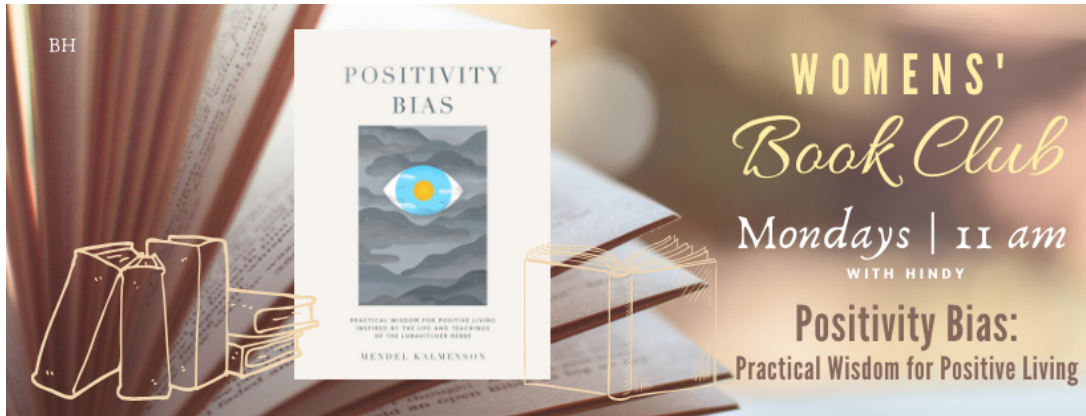
The best part of this is that we have an entire month to work on this relationship. So let us all take advantage of the opportunity given to us, and show G-d that we want to be part of His plan for the future.

Shabbat shalom.

Rabbi Wilansky



Women's Book Club



Women, come join the Weekly Book Club, as we delve into "Positivity Bias".

Monday, August 24, 11:00 am.

chabadofmaine.com/zoom



Torah Studies: Weighing Your Values



WEIGHING YOUR VALUES

If It's Important to You, You'll Find a Way to Do It

WHAT'S THAT ONE THING in your life that no matter what, you make sure you have it? A cup of coffee in the morning? The morning news? A freshly laundered shirt? The point is: if it matters to you, it'll happen. A stern warning about false weights in the Torah encourages us to bring that sense of "it matters" into our spiritual lives as well.

Join Rabbi Levi for the weekly class on the Torah Portion. **Wednesday, August 26, at 11:00 am.**

chabadofmaine.com/zoom



Hebrew School House Calls



Hebrew School House Calls

Sit back and watch as your children learn about Judaism in a fun and meaningful way in the hassle-free environment of your own home.

BOYS AND GIRLS AGES 3-13

1.5 hours include:

- Hebrew reading lessons
- Jewish values, holidays & Mitzvot workshops
- Prayer and Jewish songs

Available Sunday through Thursday | 6 week sessions



Sign up: chabadofmaine.com or Contact:
hindy@chabadofmaine.com | 843-582-2789
 A Project of Chabad of Maine



This Week @ www.ChabadofMaine.com



BY THE NUMBERS

19 Facts You Should Know About Sephardic Jewry

[More...](#)



YOUR QUESTIONS

What Does Eye for an Eye Really Mean?

Does Torah want us to poke out the eye of an eye-poker?

[More...](#)



PARSHAH

The Blame Game

While no one will argue that mans psyche is a tabula rasa, the question is: to what extent do we control the choices that we make? Whom can I blame? Where does my choice begin?

[More...](#)



ESSAY

What I Want to Tell My Friend, the Shoplifter

Daniela (not her real name) was an old friend, a very old friend, and it pained me to hear that once again she was in trouble.

[More...](#)



Parshah in a Nutshell

Parshat Shoftim

Moses instructs the people of Israel to appoint **judges** and law enforcement officers in every city. **Justice, justice** shall you pursue, he commands them, and you must administer it without corruption or favoritism. Crimes must be meticulously **investigated** and evidence thoroughly examined a minimum of two credible **witnesses** is required for conviction and punishment.

In every generation, says Moses, there will be those entrusted with the task of **interpreting and applying** the laws of the Torah. According to the law that they will teach you, and the judgment they will instruct you, you shall do; you shall not turn away from the thing that they say to you, to the **right nor to the left**.

Shoftim also includes the prohibitions against **idolatry** and **sorcery**; laws governing the appointment and behavior of a **king**; and guidelines for the creation of **cities of refuge** for the

inadvertent murderer. Also set forth are many of the rules of **war**: the exemption from battle for one who has just built a **home**, **planted a vineyard**, **married**, or is **afraid** and soft-hearted; the requirement to offer **terms of peace** before attacking a city; and the prohibition against wanton **destruction** of something of value, exemplified by the law that forbids to cut down a **fruit tree** when laying siege (in this context the Torah makes the famous statement, **For man is a tree of the field**).

The Parshah concludes with the law of the **eglah arufah** the special procedure to be followed when a person is killed by an unknown murderer and his body is found in a field which underscores the **responsibility** of the community and its leaders not only for what they do, but also for what they might have prevented from being done.



Chabad World News

Each Person, a World

Each Person, a World is a weekly newsletter that provides news, insights, and inspiration for the Jewish community. It is published by Chabad.org and is available in both English and Hebrew. The newsletter covers a wide range of topics, including Jewish news, education, and community events. It is a valuable resource for anyone interested in Jewish life and culture.

ROUNDUP

Largest List of Jewish COVID-19 Victims Released by Chabad.org

[More](#)

VIDEO



Revolutionary Medical Advances Bring New Ethical Challenges

[More](#)

EDUCATION



27,000-Square-Foot Chabad Heralds New Era for Jewish Champaign, Ill.

[More](#)



Rabbi Levi Yitzchak Schneersons Grave Declared Heritage Site

[More](#)

This email is sent from Chabad of Maine. We'd love to stay in touch with you, but if you wish to be unsubscribed from this list please [click here](#), or [click here](#) to manage your subscriptions.

Sent via ChabadOne
Communicator